

**20/00802/FUL - Car Park, East of Tesco
Supermarket, Town Lane, Stanwell, TW15 3AA**



Redevelopment of surplus hospital car park for 127 residential units comprising 122 flats and 5 terraced houses, in buildings ranging from 2 to 5 storeys in height, with associated access, parking, services, facilities and amenity space























Site Surroundings







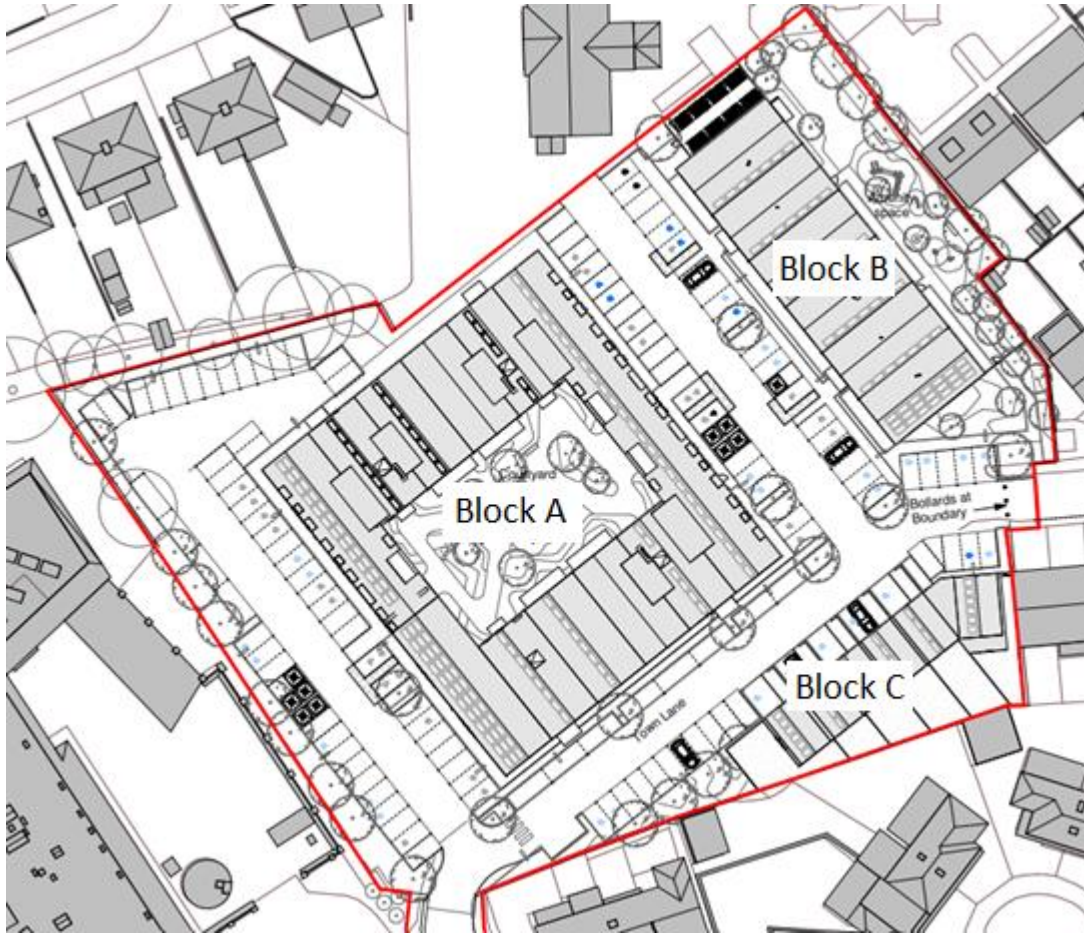




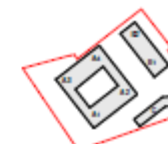




The Proposal

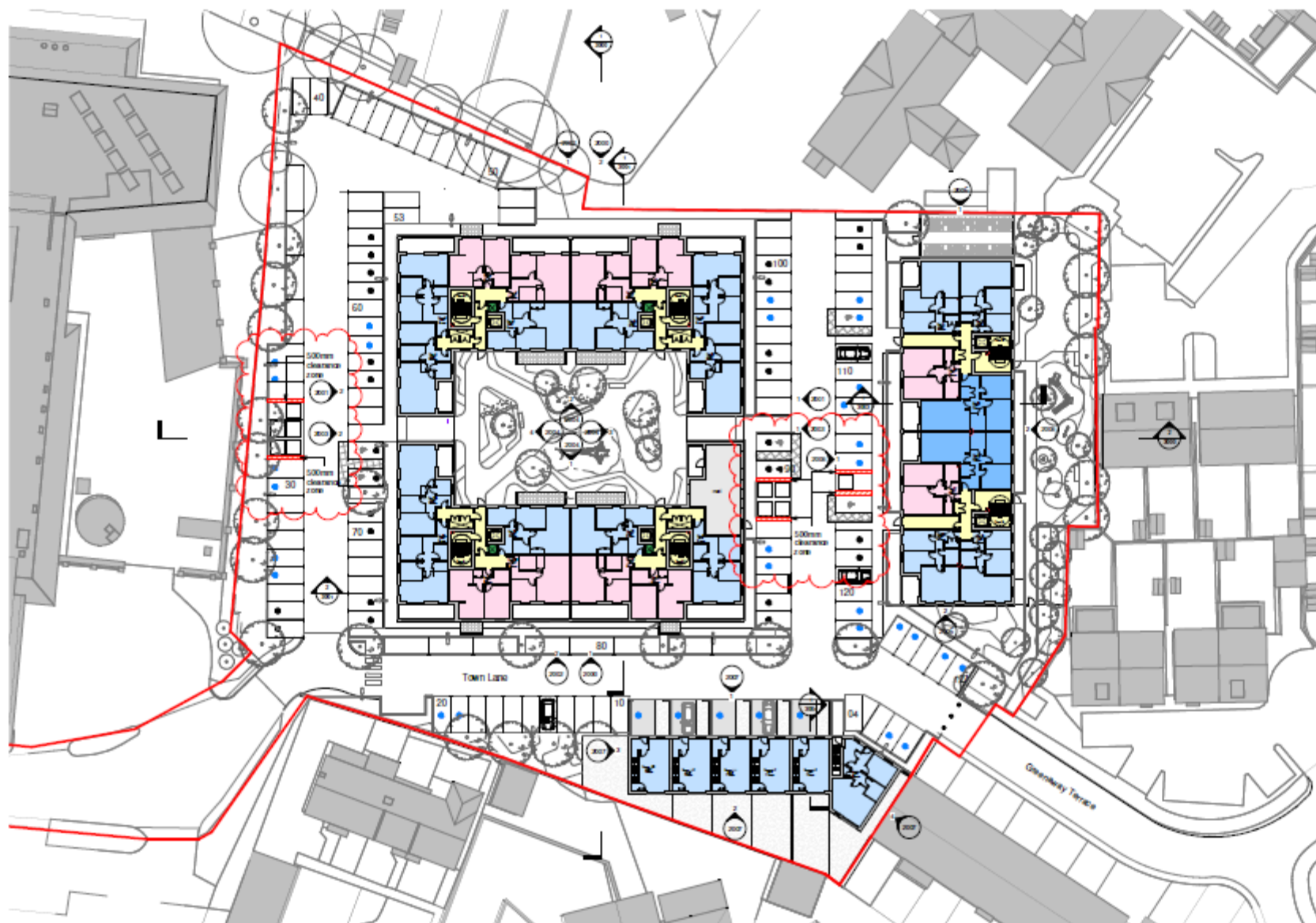


- 127 x residential units
- 2-5 storeys
- 22 x affordable housing units (17%)
- 127 parking spaces (including 31 x EV charging points)
- 127 x cycle parking spaces



KEY

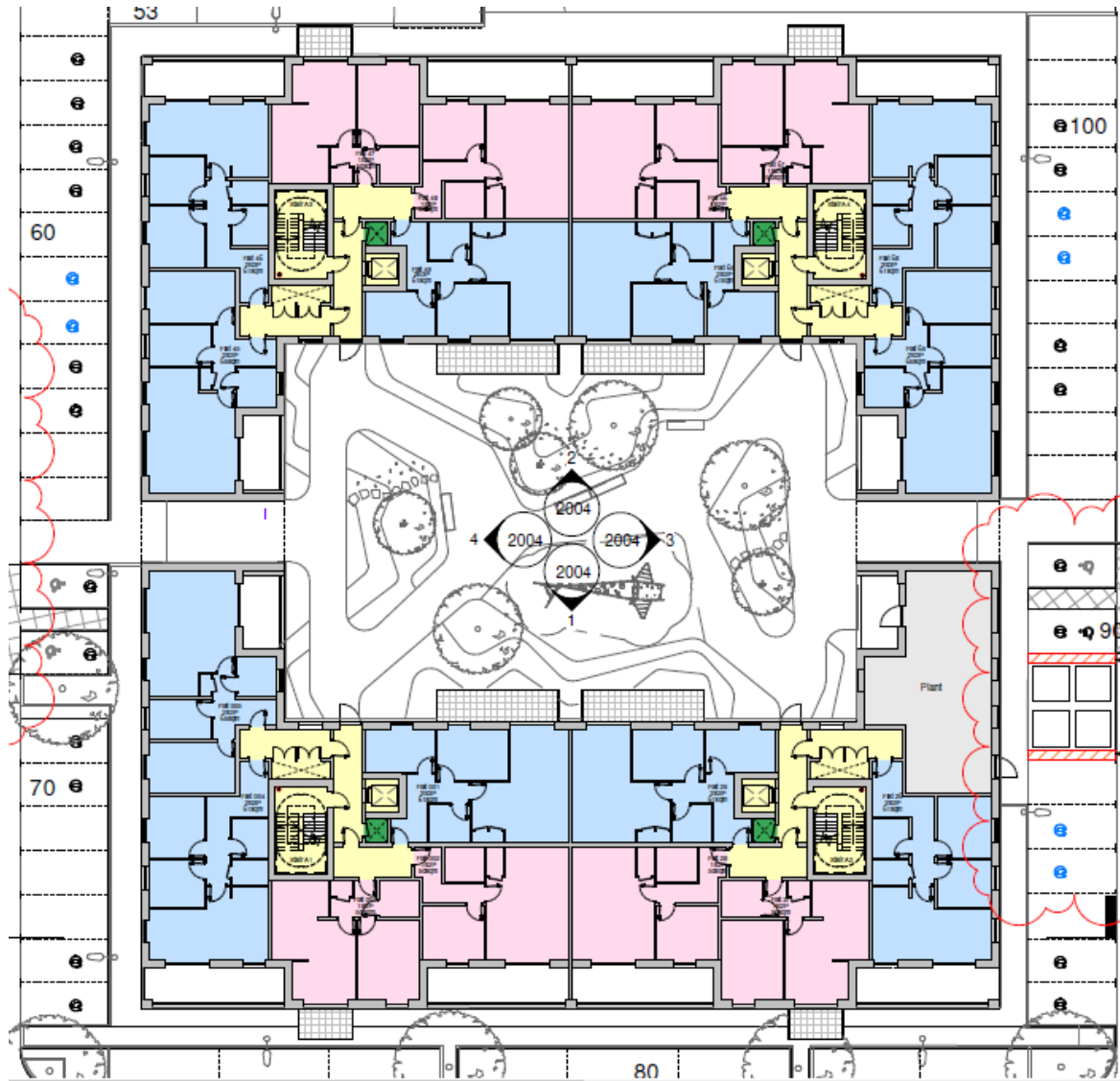
- Shop
- Shop
- Shop
- Corridor
- Pedestrian access point
- Street



Victory Place-Ashford

Level 00 General arrangement Plan

Block A



96 Units

- 34 x 1 bedroom
- 54 x 2 bedroom
- 8 x 3 bedroom





① 2002 - North Elevation (Block A)
1 : 100



② 2004 - South Courtyard Elevation (Block A)
1 : 100



② 2002 - South Elevation (Block A)
1 : 100



① 2004 - North Courtyard Elevation (Block A)
1 : 100



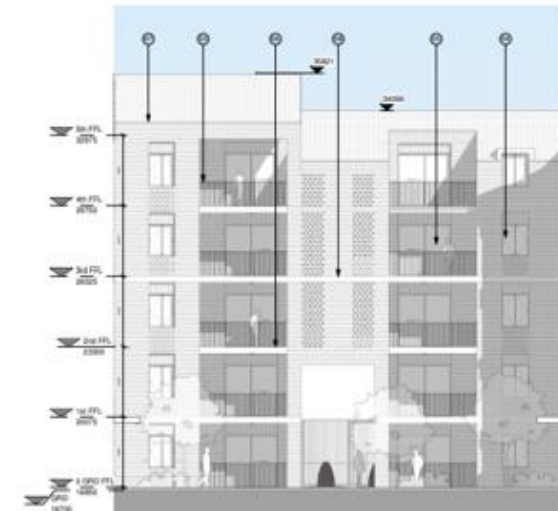
① 2003 - East Elevation (Block A)
1 : 100



③ 2004 - West Courtyard Elevation (Block A)
1 : 100

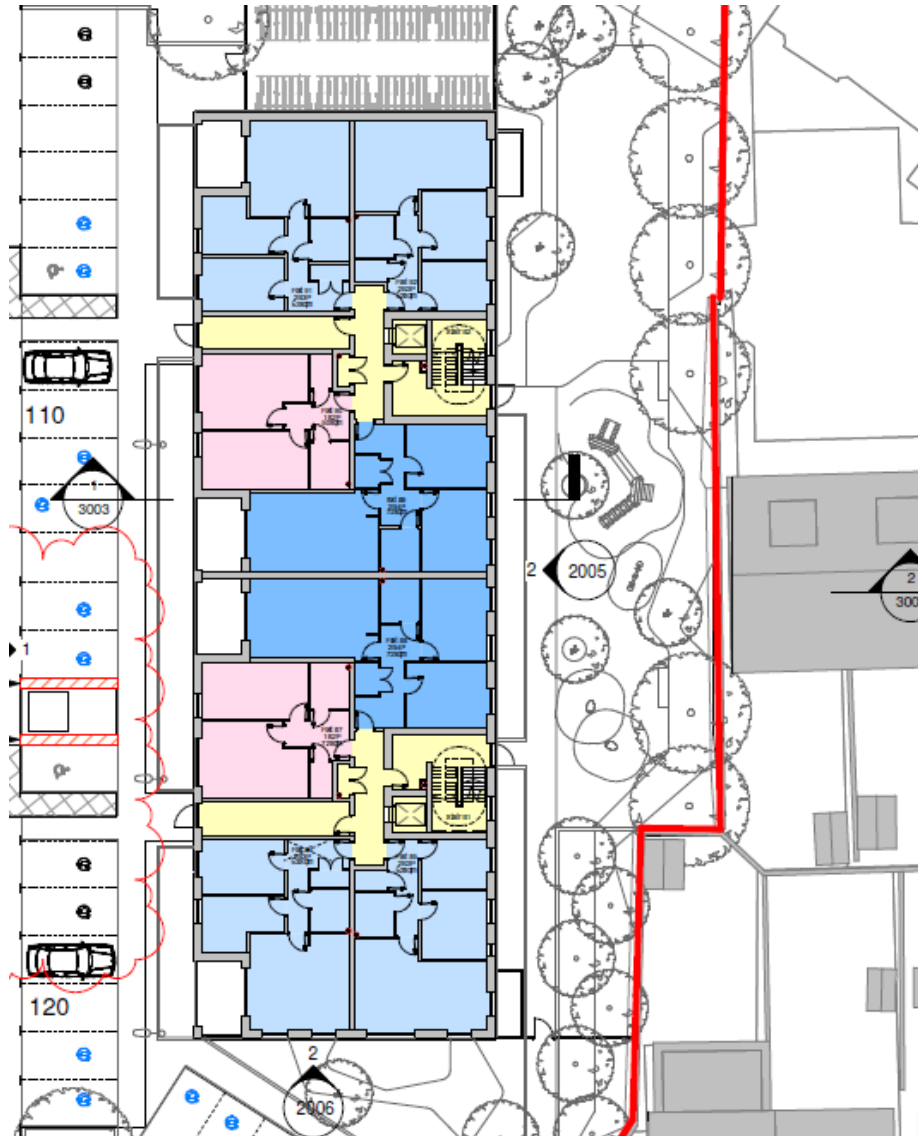


② 2003 - West Elevation (Block A)
1 : 100



④ 2004 - East Courtyard Elevation (Block A)
1 : 100

Block B



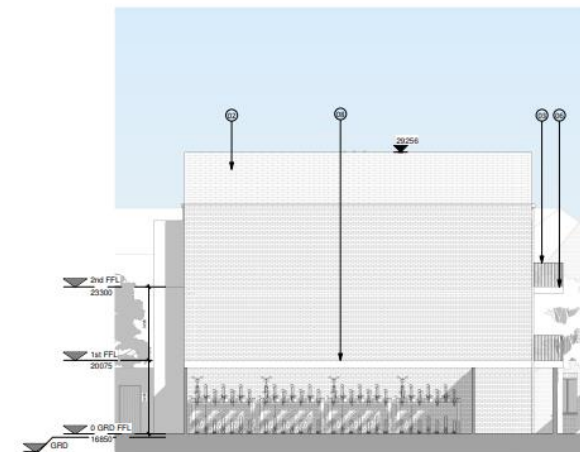
24 Units

- 22 x 2 bedroom
- 2 x 1 bedroom





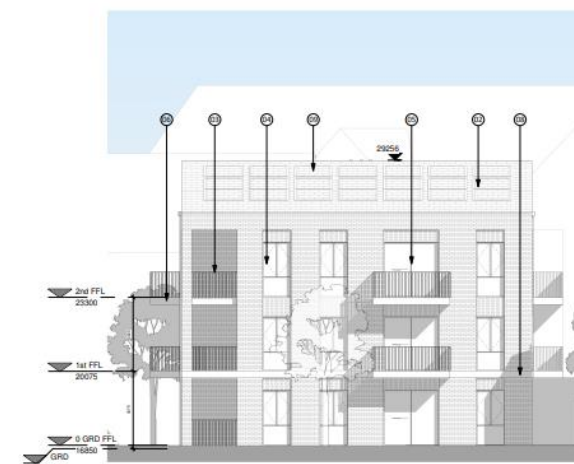
① **2005 - West Elevation 02 (Block B)**
1 : 100



① **2006 - North Elevation (Block B)**
1 : 100



② **2005 - East Elevation (Block B)**
1 : 100



② **2006 - South Elevation (Block B)**
1 : 100

Block C



- 2 x 2 bed apartments
- 5 x 2 bedroom dwellings





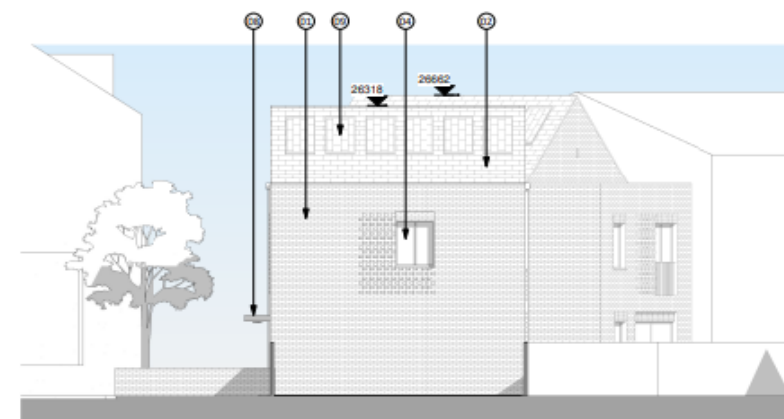
1 2007 - North Elevation 02 (Block C)
1 : 100



2 2007 - South Elevation 01 (Block C)
1 : 100



4 2007 - West Elevation (Block C)
1 : 100



3 2007 - East Elevation (Block C)
1 : 100